

Detached houses in S'Agaró Finishes Specification

Bienvenidos a casa

ESPIGUL®



Index

In this presentation, you'll discover all the elements and details that will shape your future home. From the structure to the interior finishes, we'll guide you through everything that makes it a truly unique space.

- 01 Exterior finishes
- 02 Exterior carpentry
- 03 Interior flooring /
Garage
- 04 Interior Wall Finishes
- 05 Interior Carpentry
- 06 Kitchen
- 07 Baths
- 08 Installations

Exterior finishes

Facade finished with white mortar and white paint.
 Paving in front of the garage with BREINCO-type paving blocks or similar.
 Garage cladding in natural stone.
 Flat roof finished with gravel.
 Skylight in the staircase area.
 Terrace finished with paving.



Exterior carpentry



Aluminium enclosures with double glazing by CORTIZO or similar brand. Hidden-track system for sliding doors in the dining area.
 Enclosures with thermal break, finished in anthracite grey or matte black.
 Low-emissivity and solar-protection glass.
 Opening systems: sliding and hinged.
 Entrance door in aged oak wood.
 Motorized roll-up garage door with safety photocell.

Interior flooring / Garage



INTERIOR FLOORING

Large-format rectified ceramic flooring (90x90 or similar).
White PVC skirting board.

GARAGE

Rectified non-slip ceramic flooring (60x60 or similar).

Interior Wall Finishes



In bathrooms, rectified porcelain material with the option to choose between different models and formats.

Interior walls and ceilings finished with two coats of smooth white plastic paint.



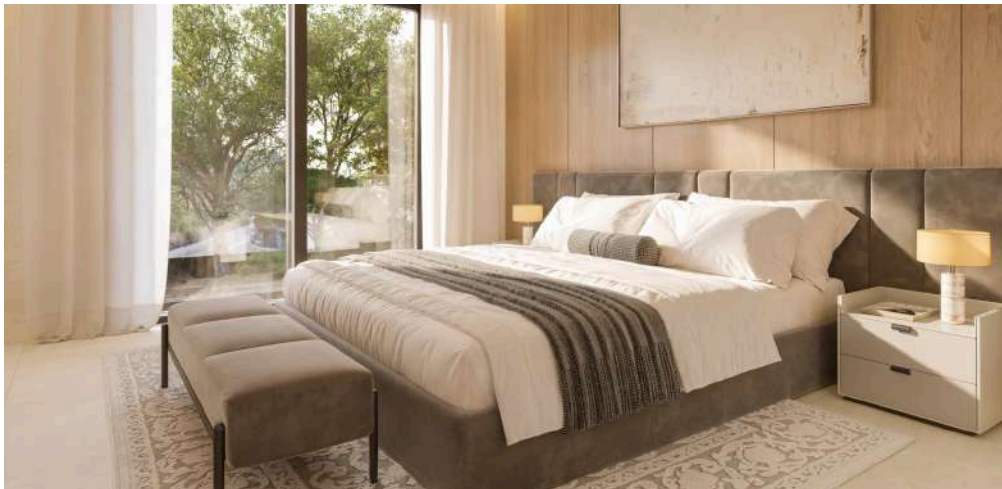
Interior Carpentry

Interior doors veneered in oak, floor-to-ceiling, with stainless steel fittings, magnetic closures, and concealed hardware.

Wardrobes in melamine, with textile-effect interior finishes.

Each wardrobe includes a top shelf and a hanging rail.

Possibility to customize the interior layout of each wardrobe upon request and with an additional quotation.



Kitchen

Kitchen furniture finished in white on doors and drawers, by SANTOS or similar brand, with a DEKTON or equivalent countertop and SIEMENS or similar appliances.

Included appliances: BORA System induction hob (with extraction and air recirculation system), microwave, and oven.

Option to integrate the refrigerator and dishwasher with the same finish as the kitchen furniture (available upon request and with an additional quotation).

Sink and tap by BLANCO or similar brand.



Baths

Bathrooms are delivered with LED backlit mirrors and wall-mounted vanity units (in first-floor bathrooms).

Wall-mounted washbasin in the ground-floor bathroom (option to install a suspended vanity unit available upon request and with an additional quotation).

Concealed faucets in the washbasins and concealed thermostatic faucets in the showers.

Flush shower tray in white finish with integrated drain.

Pre-installation for electric towel rail.



Installations

[1] Electrical Installation

Electrical network installed in compliance with current regulations.

Switches and sockets by SCHNEIDER or similar brand.

Television and telephone outlets according to current telecommunications standards.

Antenna for TV/Satellite signal reception installed on the roof with receiver.

[2] Communication Network Installation

Communication network points installed as follows: 3 in the living-dining room, 2 in the master bedroom, and 1 in each of the remaining bedrooms.

Installation of a hub inside a telecommunications cabinet to centralize and connect the entire internal network of the dwelling.

Cabinet prepared for router installation and fiber optic connection.

[3] Water Installation

Distribution network of interior piping for cold and hot water, installed in compliance with current regulations.

Shut-off valves in each wet area.

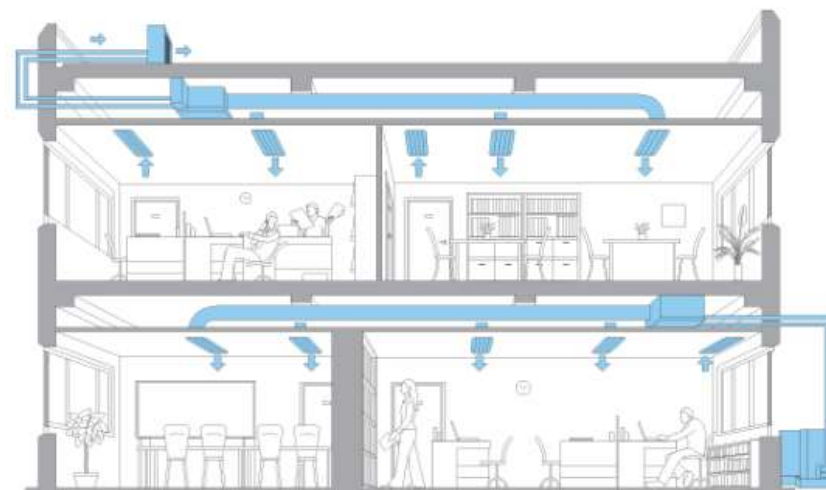
Sustainable domestic hot water production through aerothermal system.

[4] Climate Control Installation

Air conditioning system with MITSUBISHI or similar brand units, using ducts with linear and adjustable grilles in each room.

The installation includes a return air system to ensure proper indoor air recirculation.

[5] Underfloor heating installation.



ESPIGUL®

ESPIGUL.COM

COSTABRAVA@ESPIGUL.COM

872 046 515

*The construction company reserves the right to make any modifications it deems appropriate, whether due to market requirements or any other circumstances, replacing the materials or finishes with others of equivalent or superior quality. The photographs shown are not contractual; their purpose is purely illustrative, to accompany the text and depict possible finishes of these homes. The written specifications in this report shall prevail over the images, as some of the finishes shown may involve an additional cost for materials and installation, which will be quoted separately.